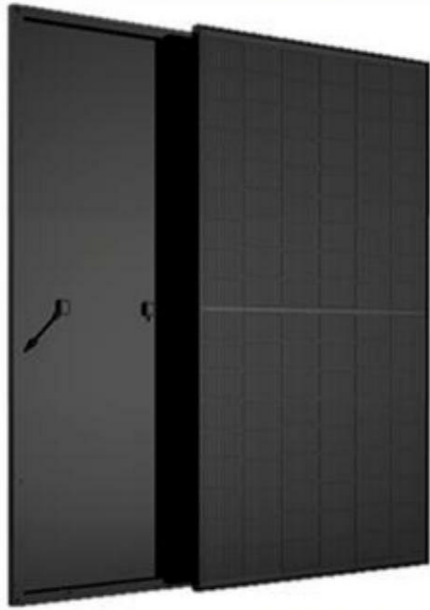




# LINUO SOLAR 420W-430W

## Topcon

Monocrystalline PV Module  
LSTSMH108P Series (182)



SMBB technology, higher component power



Guaranteed 0~+5W positive tolerance to ensure power output



Dual stage 100% EL Inspection



Lower power attenuation higher generation returns



Excellent PID resistance



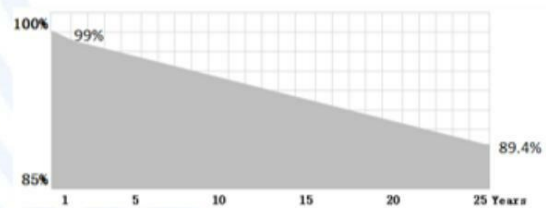
Reduced surface reflection and self-cleaning

### Comprehensive Certificates

- IEC61215, IEC61730
- TUV, CE
- ISO9001: 2015
- ISO14001: 2015
- ISO45001: 2018



### Superior Warranty



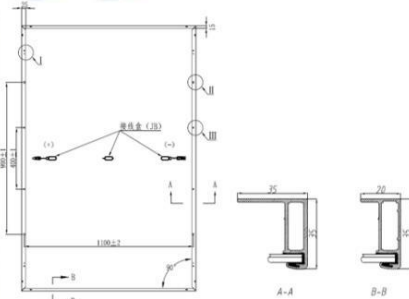
Shandong Linuo Solar Power Technology Co.,Ltd  
 Add: No.30766 Jingshidong Road, Jinan Zone, CHINA(Shandong) Pilot Free Trade Zone



# LINUO SOLAR LSTSMH108P-420~430W

## Mechanical Specifications @STC

Solar Cells:	Mono
Number of Cells:	108pcs
Module:	1722×1134×35mm
Weight:	21 kg±3%
Snow/Wind Load:	5400/2400 Pa
Thickness of Glass:	dual 3.2mm
Junction Box:	IP68, 3 Diodes
Connector:	HTC-16,
IP68	
Length:	(+)250mm /(-)300mm(including connector)



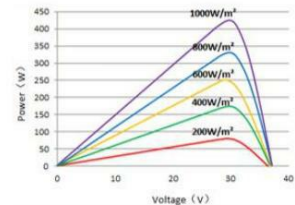
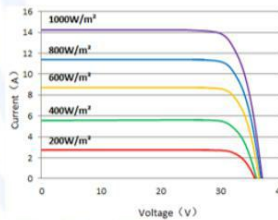
## Electrical Specifications @STC

Pmax (W) 0~+5W	Umpp (V)	Impp(A)	Uoc (V) ±3%	Isc(A) ±3%	Module Efficiency	Max System Voltage	Max Series Fuse
420	31.82	13.20	38.19	14.05	21.51%	1500V	25A
425	32.12	13.24	38.55	14.08	21.76%	1500V	25A
430	32.26	13.34	38.71	14.17	22.02%	1500V	25A

## Temperature Parameter

Temperature Cycling Range:	-40°C ~ +85°C
Norminal Module Operating Temperature:	45±2 °C
Temperature Coefficient of Isc:	0.021%/°C
Temperature Coefficient of Voc :	-0.250%/°C
Temperature Coefficient of Pmax :	-0.337%/°C

## I-V Curve LSDMH144-570W



## Packaging Configuration

Modules Per Pallet:	31pcs
Modules Per 40 ' HQ:	806pcs

## Guarantee

12-year warranty on materials & workmanship  
25-year linear power output warranty

※ Specifications subject to technical changes and tests, Linuo Power reserves the right of final interpretation.

Shandong Linuo Solar Power Technology Co.,Ltd  
Add: No.30766 Jingshidong Road, Jinan Zone, CHINA(Shandong) Pilot Free Trade Zone  
Web: <http://en.linuopv.com/>